



**India Meteorological Department
(Ministry of Earth Sciences)**

BULLETIN NUMBER: 20 (BOB/04/2021)

TIME OF ISSUE: 1400 HOURS IST

DATED: 27.09.2021

FROM: INDIA METEOROLOGICAL DEPARTMENT (FAX NO. 24643965/24699216/24623220)

**TO: CONTROL ROOM, NDM, MINISTRY OF HOME AFFAIRS (FAX.NO. 23093750)
CONTROL ROOM NDMA (FAX.NO. 26701729)
CABINET SECRETARIAT (FAX.NO.23012284, 23018638)
PS TO HON'BLE MINISTER FOR S & T AND EARTH SCIENCES (FAX NO.23316745)
SECRETARY, MOES, (FAX NO. 24629777)
H.Q. (INTEGRATED DEFENCE STAFF AND CDS) (FAX NO. 23005137/23005147)
DIRECTOR GENERAL, DOORDARSHAN (23385843)
DIRECTOR GENERAL, AIR (23421105, 23421219)
PIB MOES (FAX NO. 23389042)
UNI (FAX NO. 23355841)
D.G. NATIONAL DISASTER RESPONSE FORCE (NDRF) (FAX NO. 26105912, 2436 3260)
DIRECTOR, PUNCTUALITY, INDIAN RAILWAYS (FAX NO. 23388503)
CHIEF SECRETARY, GOVT. OF ODISHA (FAX NO. 0674 -2536660)
CHIEF SECRETARY, ANDHRA PRADESH (FAX NO. 0863-2441029, 08645-246600)
CHIEF SECRETARY, TELANGANA (FAX NO. 040-23453700)
CHIEF SECRETARY, CHATTISGARH (FAX NO 0771-2221206)
CHIEF SECRETARY, MAHARASHTRA (FAX NO 022-22028594)**

Sub: Deep Depression (remnant of Cyclonic Storm 'GULAB') over south Odisha & adjoining south Chhattisgarh.

The Deep Depression over south Odisha and adjoining south Chhattisgarh moved westwards with a speed of 14 kmph during last 06 hours, lay centered at 1130 hrs IST of 27th September 2021 over south Odisha and adjoining south Chhattisgarh near Lat. 18.5°N and Long. 82.0°E, about 65 km south of Jagdalpur (Chhattisgarh) and 150 km east-northeast of Bhadrachalam (Telangana).

It is likely to move nearly westwards and weaken into a Depression during next 06 hours and into a well marked Low pressure area during subsequent 24 hours. The system is likely to emerge into northeast Arabian Sea and adjoining Gujarat coast around 30th September evening and there is likelihood for the system to further intensify over northeast Arabian Sea during the subsequent 24 hours.

Rainfall realised in cm (7 cm or more) during past 24 hours ending at 0830 hours IST of 27.09.2021 over Coastal Andhra Pradesh and Odisha is given in **annexure**.

Forecast track and intensity are given in the following table:

Date/Time(IST)	Position (Lat. °N/ long. °E)	Maximum sustained surface wind speed (Kmph)	Category of cyclonic disturbance
27.09.21/1130	18.5/82.0	50-60 gusting to 70	Deep Depression
27.09.21/1730	18.6/81.4	40-50 gusting to 60	Depression
27.09.21/2330	18.7/80.8	30-40 gusting to 50	Depression

Warnings:

(i) Rainfall

- 27th Sept.: Light to moderate rainfall at most places with **heavy to very heavy & extremely heavy falls at isolated places** very likely over Telangana, Marathwada Vidarbha, north Coastal Andhra Pradesh & south Chhattisgarh and heavy to very heavy falls at isolated places over south Odisha, Rayalaseema and Madhya Maharashtra.
- 28th Sept.: Light to moderate rainfall at most places with **heavy to very heavy & extremely heavy falls at isolated places** very likely over Konkan, Madhya Maharashtra and Gujarat region.

(ii) Wind warning

- Squally weather with wind speed occasionally reaching 40-50 kmph gusting to 60 kmph, very likely to prevail over Westcentral & adjoining northwest Bay of Bengal off Andhra Pradesh and adjoining south Odisha coasts during next 06 hours and decrease thereafter.
- Squally wind, speed reaching 50-60 kmph gusting to 70 kmph, is likely to prevail over north Andhra Pradesh (Srikakulam, Vizianagaram, Visakhapatnam Districts) and south Odisha districts of Raigada, Koraput, Navrangpur and Malkangiri during next 06 hours and decrease thereafter becoming 35-45 gusting to 55 kmph over these areas for subsequent 12 hours.
- Squally wind, speed reaching 45-55 kmph gusting to 65 kmph likely to prevail over Sukma, Bastar & Dantewada districts of south Chhattisgarh and squally winds speed reaching 40 kmph to 50 kmph gusting to 60 kmph likely to prevail over north Telangana during next 12 hours.

(iii) Sea condition

- Sea condition will be rough to very rough over Westcentral and adjoining Northwest Bay of Bengal and along and off Andhra Pradesh and adjoining Odisha coasts during next 06 hours and improve gradually thereafter.

(iv) Fishermen Warning

- The fishermen are advised not to venture into Westcentral and adjoining Northwest Bay of Bengal and along and off Andhra Pradesh and adjoining Odisha coasts during next 06 hours.

(vii) EXPECTED IMPACT & ACTION SUGGESTED due to Strong winds & very Heavy/Extremely heavy Rainfall.

- Partial Damage to thatched huts.
- Minor damage to power and communication lines due to breaking of branches and uprooting of trees.
- Major damage to Kutcha and minor damage to Pucca roads.
- Localized Flooding of roads, inundation and water logging in low lying areas and closure of underpasses mainly in urban areas of the above region.
- Occasional reduction in visibility due to heavy rainfall.
- Disruption of traffic in cities due to water logging in roads.
- Possibilities of damage to vulnerable structure.
- Localized Landslides/Mudslides
- Damage to standing crops and horticulture including paddy, banana, papaya trees and orchards due to inundation and strong winds.
- It may lead to riverine flooding in some river catchments (for riverine flooding please visit Web page of CWC)

Action Suggested.

- Avoid staying in vulnerable structure.
- Avoid going to areas that face the water logging problems often.
- Check for traffic congestion on your route before leaving for your destination.
- Follow any traffic advisories that are issued in this regard.
- Follow IMD warnings for updates

(Sunitha Devi. S)
Scientist E, RSMC, New Delhi

Next bulletin will be issued at 2030 hrs IST of today, the 27th September, 2021.

Copy to: ACWC Kolkata/ Chennai/CWC Bhubaneswar/CWC Visakhapatnam/MC Ranchi/MC Hyderabad/MC Raipur

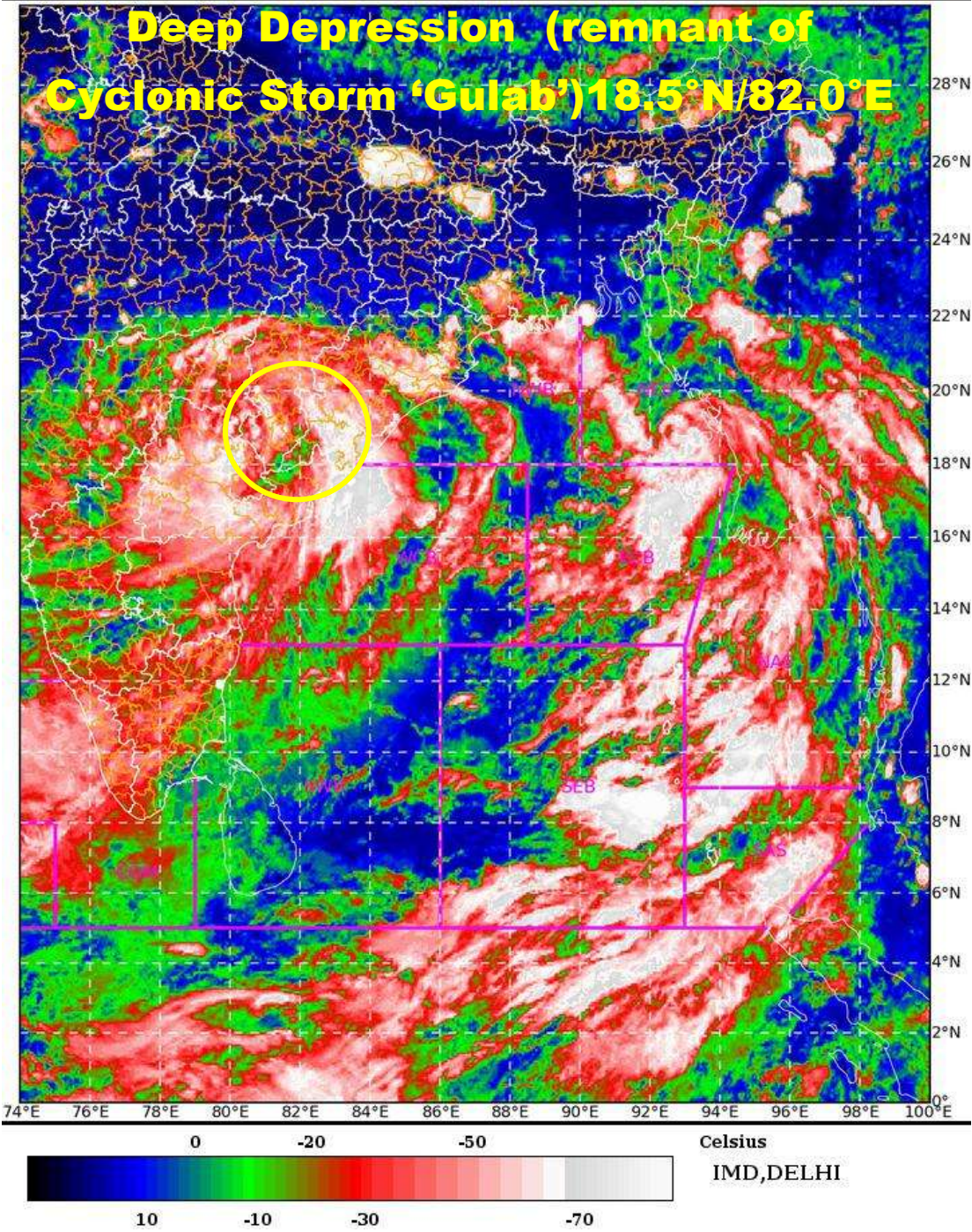
<p>LEGEND: Heavy Rainfall: 64.5 to 115.5mm, Very Heavy Rainfall: 115.6 to 204.4mm, Extremely Heavy Rainfall: 204.5mm or more. Many Places: 51% to 75% of the stations, Most Places: more than 76% of total stations, Isolated Places: Less than 25% of total stations</p>

SAT : INSAT-3D IMG 27-09-2021/(0730 to 0756) GMT

IMG_TIR1_TEMP 10.8 um 27-09-2021/(1300 to 1326) IST



L1C Mercator





OBSERVED AND FORECAST TRACK OF DEEP DEPRESSION (REMNANT OF CYCLONIC STORM GULAB) OVER SOUTH ODISHA AND ADJOINING SOUTH CHHATISGARH BASED ON 0600 UTC OF 27TH SEPTEMBER, 2021



DATE/TIME IN UTC
IST=UTC + 0530

L: LOW PRESSURE AREA

WML: WELL MARKED LOW PRESSURE AREA

D: DEPRESSION (17-27 KT)

DD: DEEP DEPRESSION (28-33 KT)

CS: CYCLONIC STORM (34-47 KT)

SCS: SEVERE CYCLONIC STORM (48-63KT)

VSCS: VERY SEVERE CYCLONIC STORM (64-89 KT)

ESCS: EXTREMELY SEVERE CYCLONIC STORM (90-119 KT)

SuCS: SUPER CYCLONIC STORM (≥ 120 KT)

- LESS THAN 34 KT
- 34-47 KT
- ≥ 48 KT

— OBSERVED TRACK

— FORECAST TRACK

▲ CONE OF UNCERTAINTY

AREA OF MAXIMUM SUSTAINED WIND SPEED:

— 28-33 KT (52-61 KMPH)

— 34-49 KT (62-91 KMPH)

— 50-63 KT (92-117 KMPH)

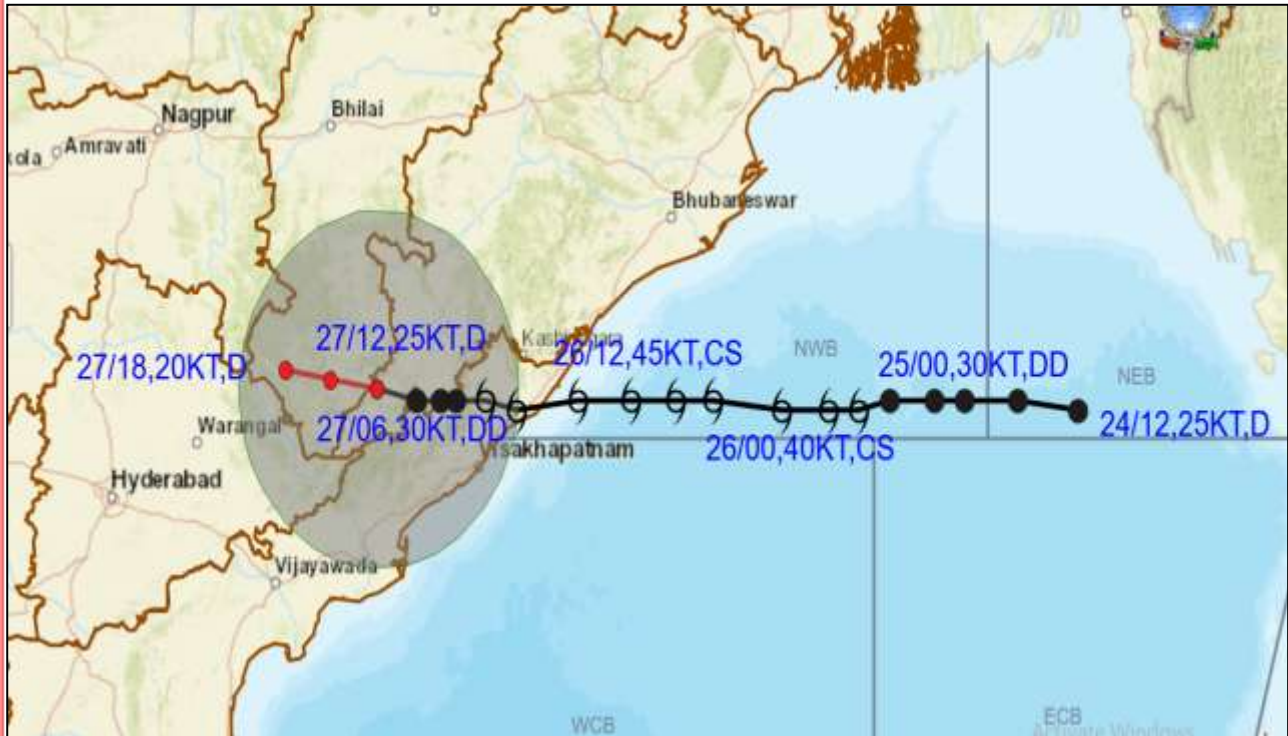
— ≥ 64 KT (≥ 118 KMPH)

IMPACT OVER THE SEA

MSW (knot/kmph)	Impact	Action
28-33 (52-61)	Very rough seas	Total suspension of fishing operations
34-49 (62-91)	High to very high seas	Total suspension of fishing operations
50-63 (92-117)	Very high seas	Total suspension of fishing operations
≥ 64 (≥ 118)	Phenomenal	Total suspension of fishing operations



OBSERVED AND FORECAST TRACK ALONGWITH QUADRANT WIND DISTRIBUTION OF DEEP DEPRESSION (REMNANT OF CYCLONIC STORM GULAB) OVER SOUTH ODISHA AND ADJOINING SOUTH CHHATISGARH BASED ON 0600 UTC OF 27TH SEPTEMBER, 2021



DATE/TIME IN UTC

IST=UTC + 0530

L: LOW PRESSURE AREA

WML: WELL MARKED LOW PRESSURE AREA

D: DEPRESSION (17-27 KT)

DD: DEEP DEPRESSION (28-33 KT)

CS: CYCLONIC STORM (34-47 KT)

SCS: SEVERE CYCLONIC STORM (48-63KT)

VSCS: VERY SEVERE CYCLONIC STORM (64-89 KT)

ESCS: EXTREMELY SEVERE CYCLONIC STORM (90-119 KT)

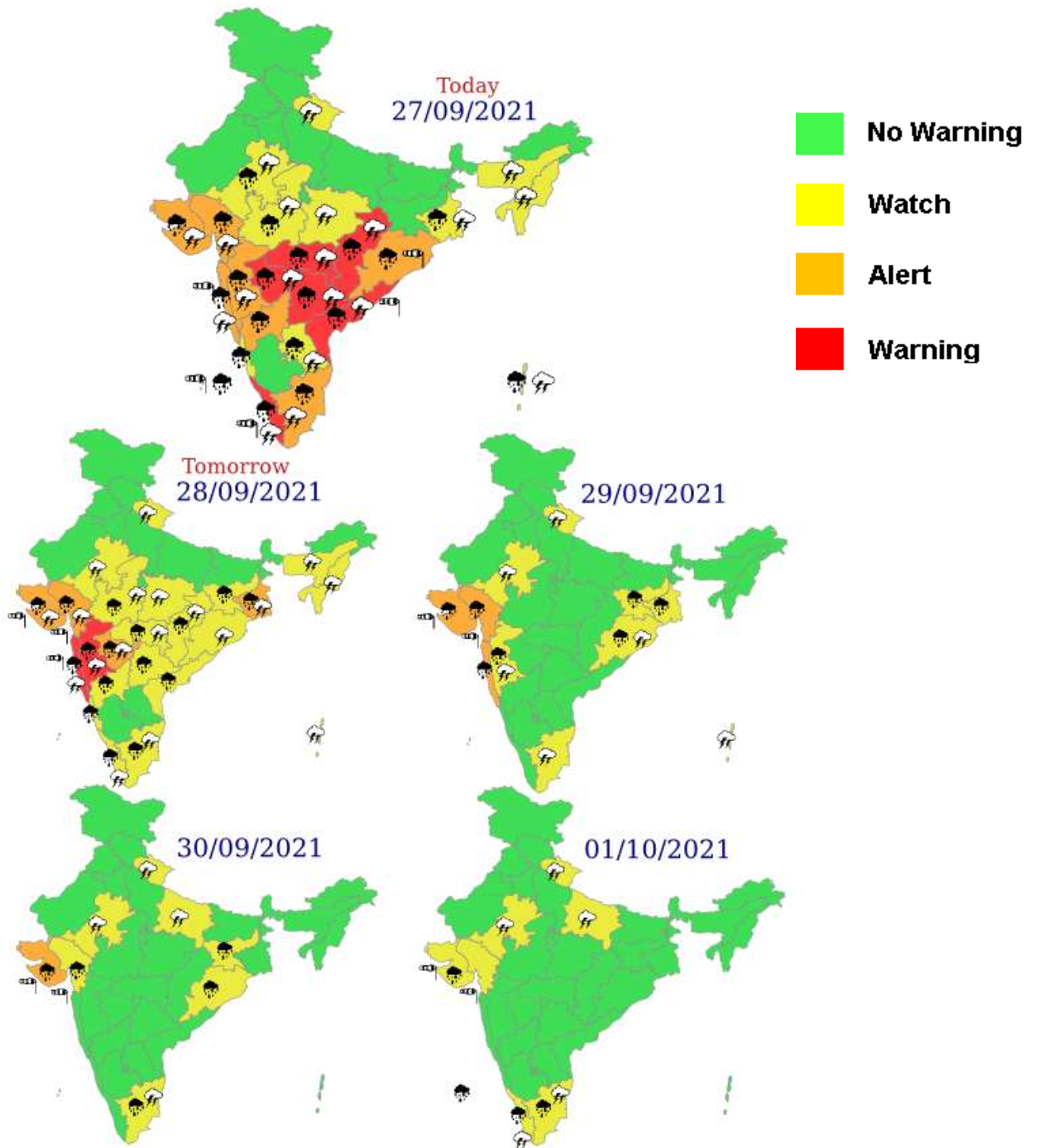
SuCS: SUPER CYCLONIC STORM (≥ 120 KT)

- LESS THAN 34 KT
- 34-47 KT
- ≥ 48 KT
- OBSERVED TRACK
- FORECAST TRACK
- ▲ CONE OF UNCERTAINTY
- AREA OF MAXIMUM SUSTAINED WIND SPEED:
- 28-33 KT (52-61 KMPH)
- 34-49 KT (62-91 KMPH)
- 50-63 KT (92-117 KMPH)
- ≥ 64 KT (≥118 KMPH)

IMPACT OVER THE SEA

MSW (knot/kmph)	Impact	Action
28-33 (52-61)	Very rough seas	Total suspension of fishing operations
34-49 (62-91)	High to very high seas	Total suspension of fishing operations
50-63 (92-117)	Very high seas	Total suspension of fishing operations
≥ 64 (≥118)	Phenomenal	Total suspension of fishing operations

Sub-division wise heavy rainfall warning for next 5 days



**Rainfall realised in cm (7 cm or more) during past 24 hours ending at 0830 hours
IST of 27.09.2021**

Coastal Andhra Pradesh Yanam

Visakhapatnam, Gajapathinagaram and Nellimarla - 28 each, Visakhapatnam - 27, Mentada - 25, Pusapatirega - 24, Garividi, Denkada and Gantyada - 19 each, Anakapalle and Salur - 18 each, Bondapalle 17, Cheepurupalle 16, Ranastalam and Therlam - 15 each, Chodavaram - 14, Vizianagaram, Vepada, Bheemunipatnam and Kalingapatnam 13 each, Bobbili, Araku Valley and Amalapuram - 12 each, Kakinada , Merakamudidam and Vijayawada - 11 each, Polavaram, Palakoderu, Chintalapudi and Koyyalagudem - 10 each, Chintapalle , Srungavarapukota, Palakonda, Tadepalligudem, Narsipatnam, Yanam, Bhimadole, Tanuku and Yelamanchili - 9 each, Palasa, Nuzvid, Seethanagaram and Parvathipuram - 8 each, Vararamachandrapur, Paderu, Balajipeta, Chintur, Eluru, Mandasa, Garugubilli, Tekkali, Kaikalur and Velairpad - 7 each.

Odisha

Pottangi - 15, Mahendragarh - 9, Mohana and Nandapur - 8, Lamataput , Semiliguda and R.Udayagiri - 7 each.